

## **:: Math&Spirits :: (Toma Gouband 2024) ::**

« Pièce bénéficiant de l'Aide à l'Écriture d'une Oeuvre Musicale Originale du Ministère de la Culture -  
Préfet de la Région Pays de la Loire »

## **:: Kamasoutrance ::**

### **Indications :**

- **Interpréter chaque cellule en boucle et choisir de jouer 1 2 ou 3 couleurs**
- **Tempo noire = 70**
- **Chaque mesure est une possibilité à jouer une fois ou en boucle**

### **Déroulement :**

**Nombre de cycles :**

**I = 15**

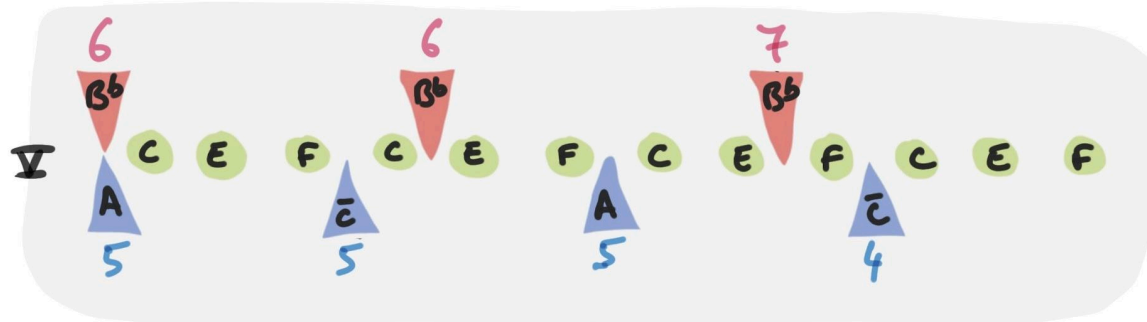
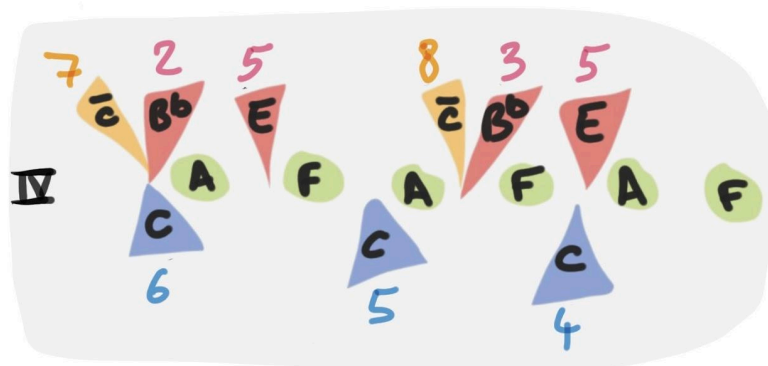
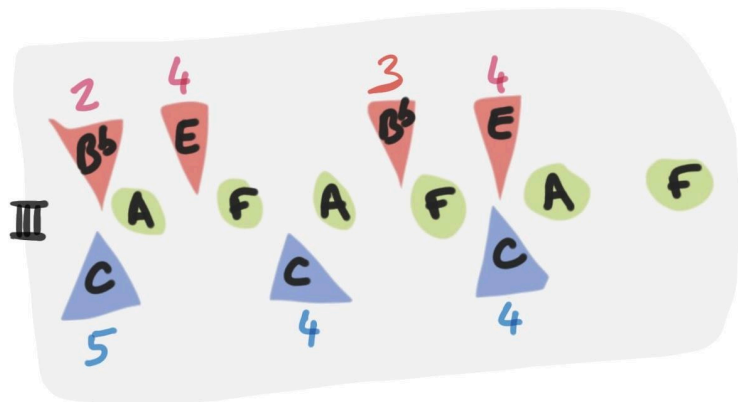
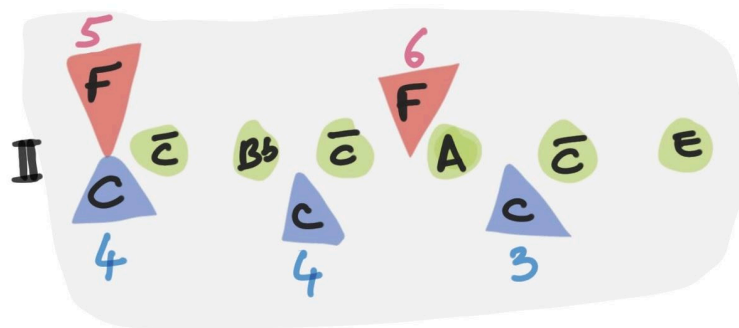
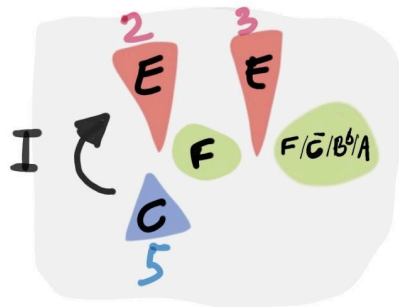
**II = 7**

**III = 6**

**IV = 5**

**V = 4**

Durée = environ 5 minutes



# KAMASOUTRANCE

**I**  
5/4

**II**  
4/4

**III**  
13/4

**IV**  
15/4

V

Handwritten musical notation on a four-staff system. The first staff has a treble clef and a 4/4 time signature. The second staff has a bass clef. The third staff has a 3/4 time signature. The fourth staff has a 3/4 time signature. The music consists of rhythmic patterns with stems and flags, and some notes with stems and flags. There are double bar lines at the end of each staff.

Four empty musical staves.