

## **:: Math&Spirits :: (Toma Gouband 2024) ::**

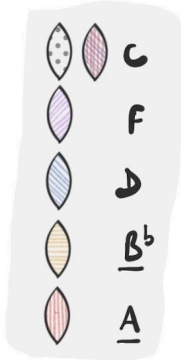
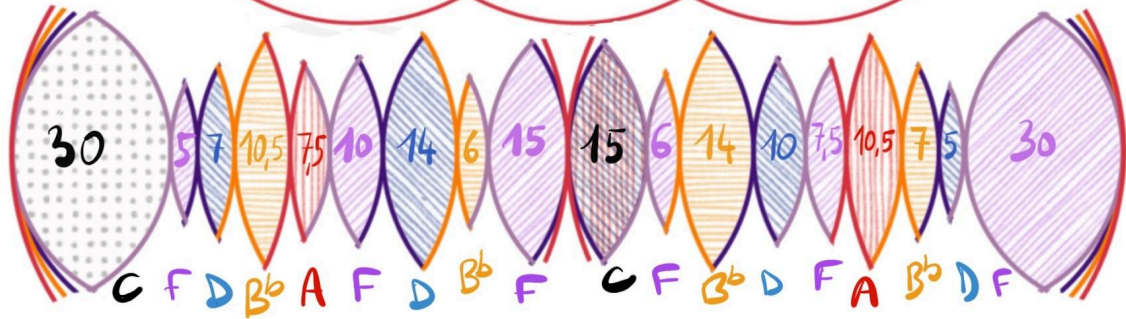
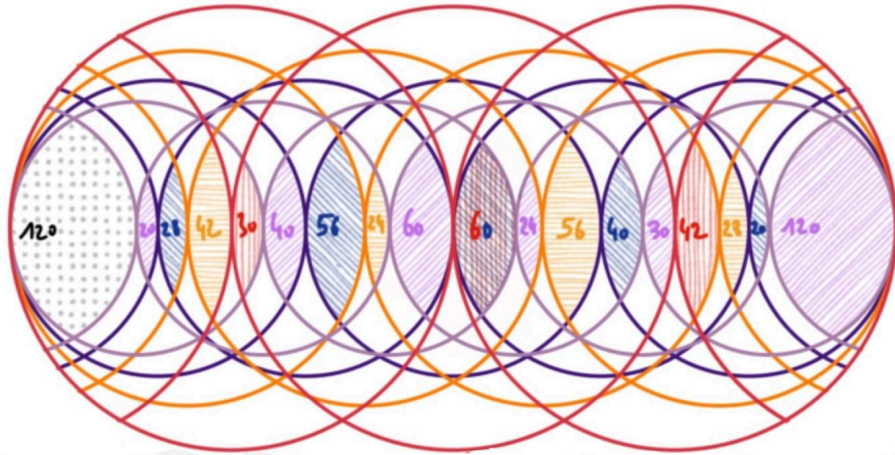
« Pièce bénéficiant de l'Aide à l'Écriture d'une Oeuvre Musicale Originale du Ministère de la Culture -  
Préfet de la Région Pays de la Loire »

## **:: 840 Phasing ::**

### **Indications :**

- Permettre au son de prendre de l'ampleur
- Le piano peut se permettre un déphasage entre voix aiguë et voix grave

Durée = environ 8 min



I

II

**Piano :**

$x_{\infty}$  I  $x_{30}$   $x_5$   $x_7$   $x_{10} (\frac{1}{2})$   $x_7 (\frac{1}{2})$   
1 min  $\text{♩} = 130$

$x_{10}$   $x_{14}$   $x_6$   $x_{15}$   $x_{15}$   $x_6$

$x_{14}$   $x_{10}$   $x_7 (\frac{1}{2})$   $x_{10} (\frac{1}{2})$   $x_7$

$x_5$   $x_{30}$   $x_{\infty}$  II  $x_{30}$   $x_5$   
30 s

Handwritten musical notation on a five-line staff. The notation consists of six measures, each containing a pair of notes (one on the upper line, one on the lower line) connected by a horizontal line. Above each pair is a label:  $x7$ ,  $x10$ ,  $(1/2)$ ,  $x7$ ,  $(1/2)$ , and  $x10$ . Vertical dashed lines separate the measures.

Handwritten musical notation on a five-line staff. The notation consists of five measures, each containing a pair of notes connected by a horizontal line. Above each pair is a label:  $x14$ ,  $x6$ ,  $x15$ ,  $x15$ , and  $x6$ .

Handwritten musical notation on a five-line staff. The notation consists of seven measures, each containing a pair of notes connected by a horizontal line. Above each pair is a label:  $x14$ ,  $x10$ ,  $x7$ ,  $(1/2)$ ,  $x10$ ,  $(1/2)$ , and  $x7$ . Vertical dashed lines separate the measures.

Handwritten musical notation on a five-line staff. The notation consists of five measures, each containing a pair of notes connected by a horizontal line. Above each pair is a label:  $x5$ ,  $x30$ ,  $x\infty$ ,  $x30$ , and  $x5$ . The third measure, labeled  $x\infty$ , features a large oval around the notes. Above the fourth measure is a Roman numeral III.

$300 \quad \downarrow = 170$

Handwritten musical notation on a five-line staff. The notes are grouped into six measures, each with a bracket above it. Above the brackets are the following labels:  $x7$ ,  $x10$ ,  $(1/2)$ ,  $x7$ ,  $(1/2)$ ,  $x10$ , and  $x14$ . Vertical dashed lines separate the measures.

Handwritten musical notation on a five-line staff. The notes are grouped into five measures, each with a bracket above it. Above the brackets are the following labels:  $x6$ ,  $x15$ ,  $x15$ ,  $x6$ , and  $x14$ .

Handwritten musical notation on a five-line staff. The notes are grouped into six measures, each with a bracket above it. Above the brackets are the following labels:  $x10$ ,  $x7$ ,  $(1/2)$ ,  $x10$ ,  $(1/2)$ , and  $x5$ . Vertical dashed lines separate the measures.

Handwritten musical notation on a five-line staff. The notes are grouped into five measures, each with a bracket above it. Above the brackets are the following labels:  $x30$ ,  $x20$ ,  $IV$ ,  $x30$ ,  $x5$ , and  $x7$ . The second measure is circled with a large oval. Below the staff, the text  $30s$  and  $\downarrow = 130$  is written.

Handwritten musical notation on a five-line staff. It consists of seven measures. The first measure has a chord with 'x 10' written above it. The second measure has a single note with '(1/2)' above it. The third measure has a chord with 'x 7' above it. The fourth measure has a single note with '(1/2)' above it. The fifth measure has a chord with 'x 10' above it. The sixth measure has a chord with 'x 14' above it. The seventh measure has a chord with 'x 6' above it. Vertical dashed lines separate the measures.

Handwritten musical notation on a five-line staff. It consists of five measures. The first measure has a chord with 'x 15' above it and two '+' signs below the notes. The second measure has a chord with 'x 15' above it. The third measure has a chord with 'x 6' above it. The fourth measure has a chord with 'x 14' above it. The fifth measure has a chord with 'x 10' above it.

Handwritten musical notation on a five-line staff. It consists of seven measures. The first measure has a chord with 'x 7' above it. The second measure has a single note with '(1/2)' above it. The third measure has a chord with 'x 10' above it. The fourth measure has a single note with '(1/2)' above it. The fifth measure has a chord with 'x 7' above it. The sixth measure has a chord with 'x 5' above it. The seventh measure has a chord with 'x 30' above it and two '+' signs below the notes. Vertical dashed lines separate the measures.

Handwritten musical notation on a five-line staff. It begins with a large 'V' shape above the staff. Below it is a large oval shape containing a single note with a stem. Above the oval is 'x 00' and below it is '30 s'. The staff continues with empty lines.

Partition percussions un cycle :

Handwritten musical score for percussion, featuring a cycle of 30 measures. The score is written on five staves. The first staff begins with a circled 'x' and 'x' above a '4' in a box, with 'x6' written above it. The notation includes various time signatures (5/4, 7/4, 8/8, 10/4, 14/4, 15/4, 17/4, 6/4) and symbols for bass drum (o), snare drum (o), and cymbal (x). A legend at the bottom identifies these symbols: 'o bass drum', 'o snare drum', and 'x cymbal'. The score concludes with 'x5' written below the final measure.

Partition contre basse un cycle, jeu à l'archet :

Handwritten musical score for double bass, featuring a cycle of 30 measures. The score is written on three staves. The first staff begins with 'ARCO' written above a circled 'f' symbol. The notation includes various time signatures (30/4, 5/4, 7/4, 21/8, 15/8, 10/4, 14/4, 6/4, 15/4, 14/4, 10/4, 15/8, 21/8, 7/4, 5/4, 30/4) and a circled 'f' symbol. The score concludes with a double bar line.

NB : se référer à la partition piano pour le déroulement